



JP Sensor

Sensor with total solution

Bio Card III

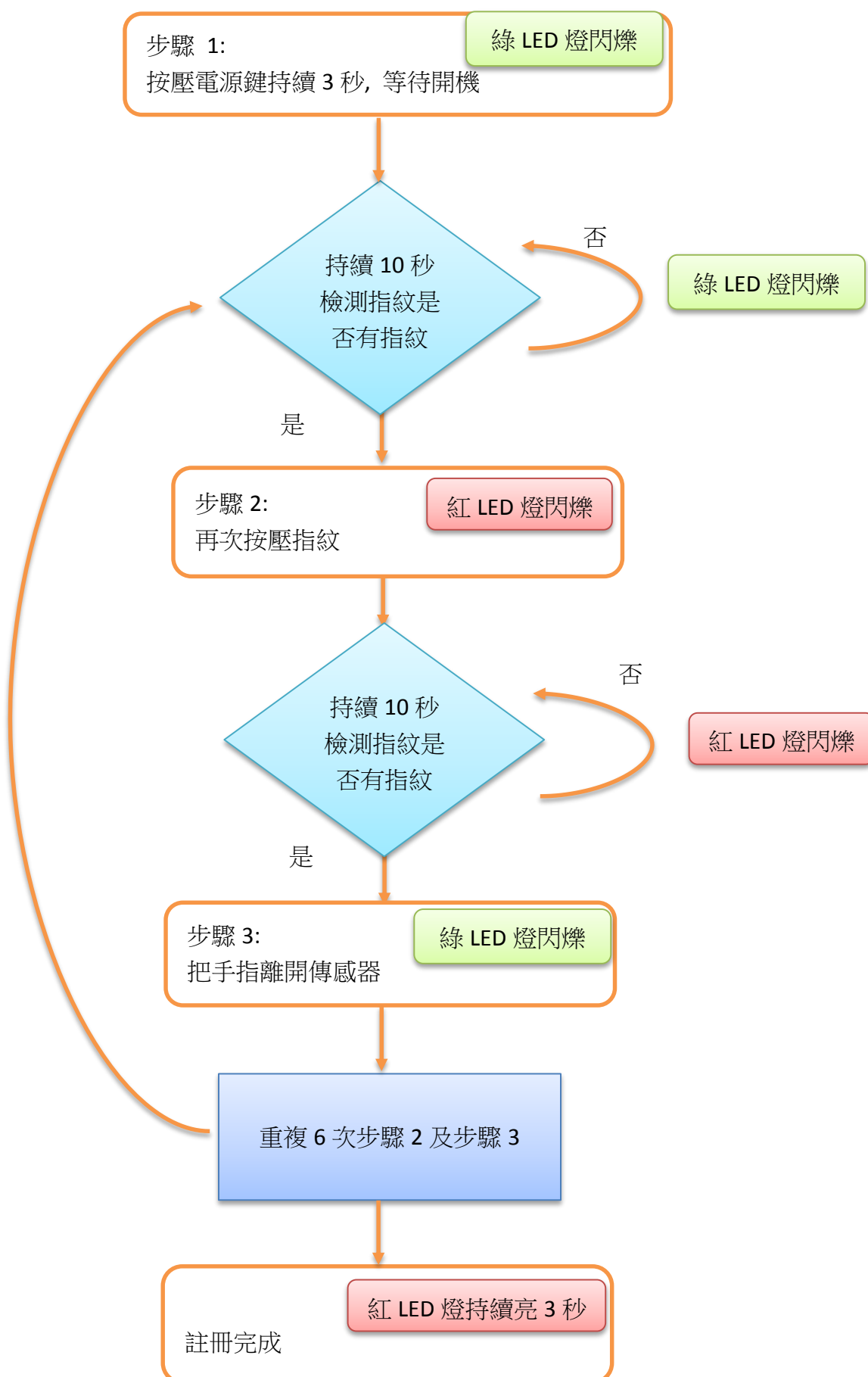


Bio Card III adopts sensor module JP2380 which is an ultra-thin CMOS fingerprint sensor combined with MCU. The design concept of Bio Card III can serve as smart card, Metro card or banking card since it is neat and compact. Cermet-like coating provides up to 6H hardness and protects sensor against scratch, impact and daily wear-and-tear.

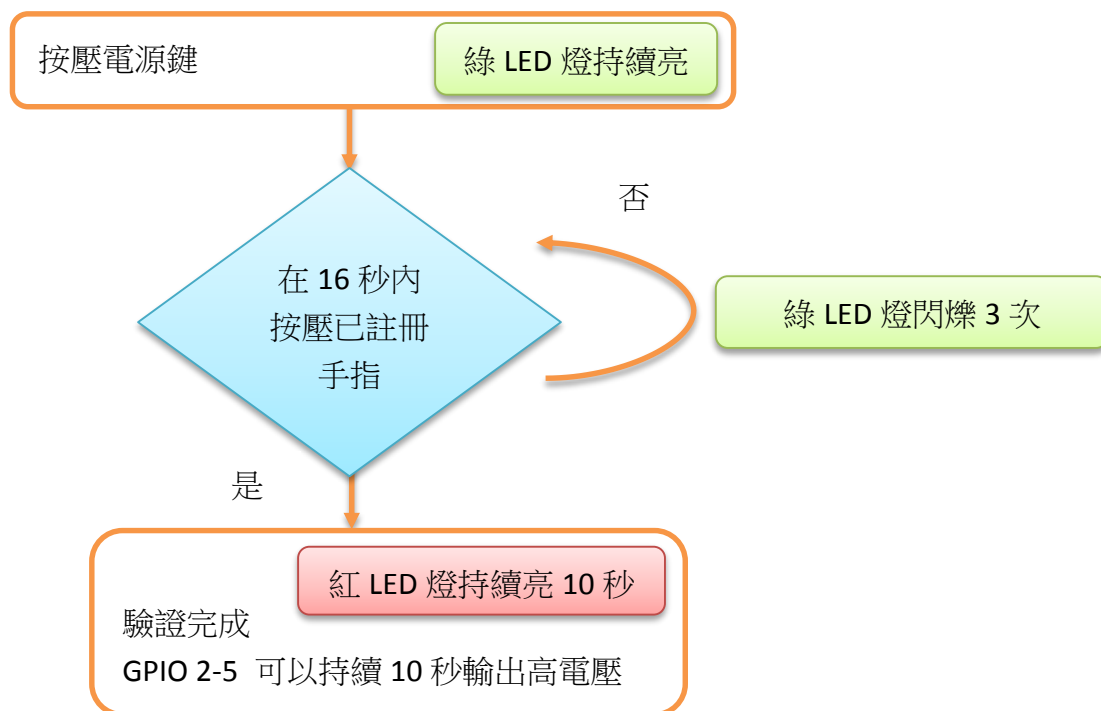
Parameters:

Item	Description	Remarks
User ID number	GPIO mode: 4 ID	
Anti-ESD	+/-15kV	
Wear-and-tear	>2.5 million finger placements	
FAR	<0.01% (Security Level 3)	
FRR	<1% (Security Level 3)	
RFID IC	1. NXP MIFARE S50 (RFID) 2. ST (NFC)	
Battery	14mAh	
Usage	140 times per full charge	
Charger	5V, 500mA	
Charging duration	20 minutes	

註冊:

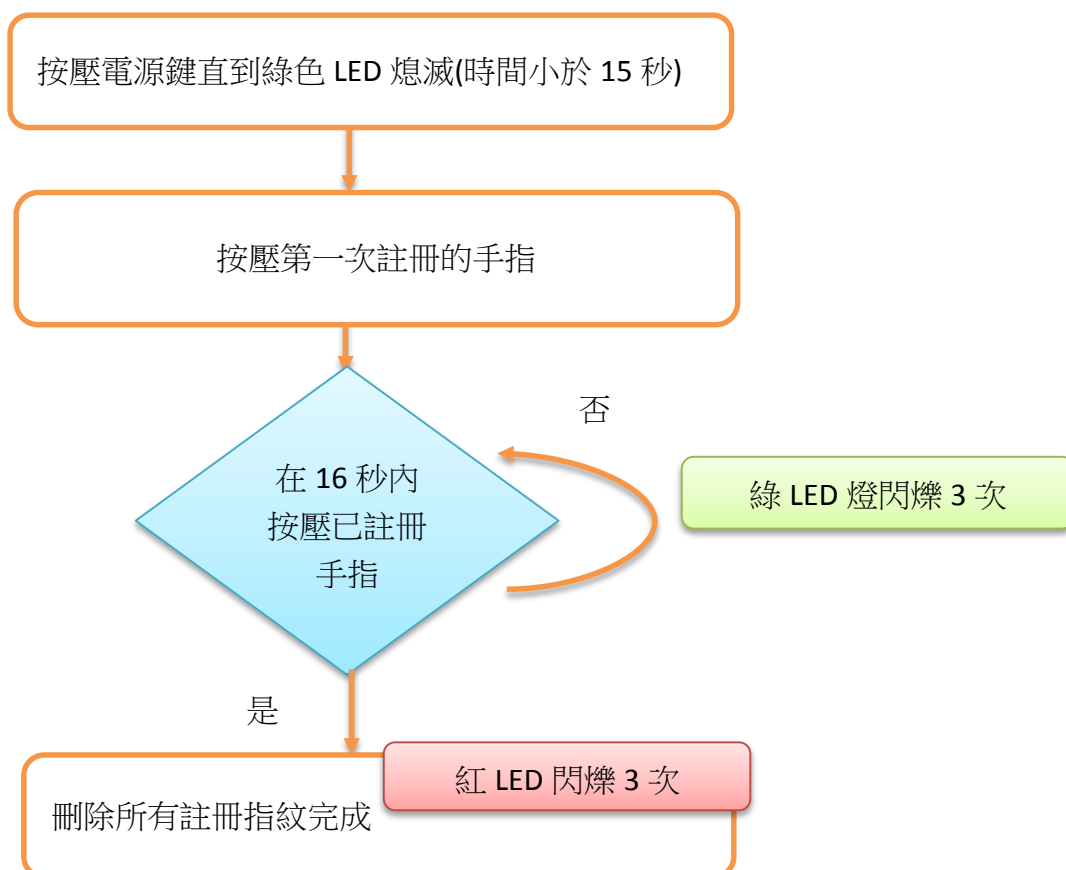


驗證:



刪除所有指紋:

只有在有註冊手指進入系統的情況下才可以刪除指紋. 非註冊手指不得刪除指紋



充電:

充電時，請使用隨附的充電座並確保充電電壓 5V, 充電電流 500mA.

充電時，請把卡片的 **sensor** 面朝下，因充電座無法判斷何時充飽電，請自行計算充電時間不得超過 20 分鐘。



Disclaimer

The information appearing in this publication is believed to be accurate.

Integrated circuits sold by JP Sensor are covered by the warranty and patent indemnification provisions stipulated in the terms of sale only. JP Sensor makes no warranty, express, statutory implied or by description regarding the information in this publication or regarding the freedom of the described chip(s) from patent infringement.

FURTHERMORE, JP SENSOR MAKES NO WARRANTY OF MERCHANTABILITY OR FITNESS FOR ANY PURPOSE. JP Sensor reserves the right to halt production or alter the specifications and prices at any time without notice. Accordingly, the reader is cautioned to verify that the data sheets and other information in this publication are current before placing orders. Products described herein are intended for use in normal commercial applications. Applications involving unusual environmental or reliability requirements, e.g. military equipment or medical life support equipment, are specifically not recommended without additional processing by JP Sensor for such applications. Please note that application circuits illustrated in this document are for reference purposes only.



JP Sensor

Sensor with total solution

JP Sensor Corporation Limited

6F., No.618, Ruiguang Rd., Neihu Dist., Taipei City 114, Taiwan

TEL: +886-2-26598608 FAX: +886-2-26598607

E-mail: sales@jpsensor.com.tw ; Web Site : <http://www.jpsensor.com.tw/>